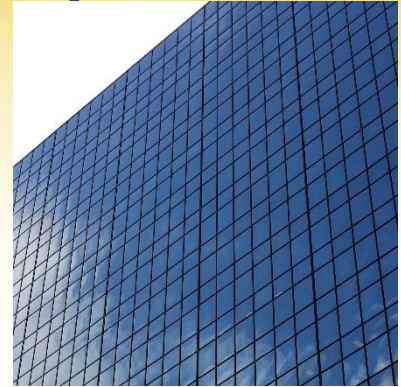




STANDARD UNDERWRITERS NETWORK

## Admitted Workers' Comp



**400** Workers' Comp classes available!

### Easy to Access:

- SUNRate (www.sunins.com)- Use **Line of Business Search Tool** (enter the class code)
- SIURate (www.siuins.com)- Access by clicking on **Workers' Comp icon**
- Submit an **Accord App #130**

Our Workers' Comp markets require minimum W-2 employee payroll \$25,000.

**Search for Workers' Comp on our  
SUN Line of Business Search Tool for a complete list of classes!**

**www.sunins.com**

We are not a Workers' Comp market for ghost policies

#### **Ineligible classes:**

Masonry\* / Concrete work\*  
 Exterior painting\*  
 Framing  
 Roofing  
 Welding  
 GC's

#### **Ineligible classes:**

Grading of Land  
 Siding  
 Drywall  
 Residential Janitorial  
 Tree Cutting  
 Home Health Care

#### **Ineligible classes:**

Towing  
 Trucking  
 Roadside Service  
 Landscaping along busy roads  
 Any operation that requires the employees to work off the ground

\* classes qualify with 3 year continuous workers' comp coverage

For More Information, Contact **Standard Underwriters Network** Directly at 678.498.4800

**Corporate Office:** P.O. Box 105609, Atlanta, Georgia 30348-5609 • **PH:** 678.498.4800 • **TF:** 800.365.1727 • **FX:** 678.498.4808

**Internet:** www.SUNins.com • **Email:** info@siuins.com • **Hours:** 8:00am - 5:30pm EST